
**2003 HOUCHENS INDUSTRIES/KHSAA
GIRLS' SWEET SIXTEEN® STATE BASKETBALL TOURNAMENT**

March 26-29 • Diddle Arena • Bowling Green



Thursday, March 27, 2003

Session 3 - Game 2

Calloway County Lakers

vs.

Jackson County Generais

FINAL GAME STATS

It's Showtime!

2003 Houchens Industries/KHSAA Girls' Sweet 16 - Game Box Score
Calloway County Lakers vs. Jackson County Lady Generals
Date: 03/27/2003 Time: 2:00 CST Site: Bowling Green, KY Attendance: 4146

Visitors: Jackson County Lady Generals															
##	Name	P	FG	3 Pt	FT	PTS	ORB	DRB	TR	PF	AST	TO	BS	ST	MIN
10	Kourtney Tyra														DNP
11	Amanda Marlin														DNP
12	Ashley Truett		0/0	0/0	0/0	0	0	0	0	0	0	0	0	0	0:34
15	* Whitney Moore		1/7	0/6	3/4	5	2	2	4	0	3	1	0	1	31:06
20	* Brittany Bingham		1/9	1/8	2/4	5	2	7	9	3	0	3	0	0	22:56
23	Kenni Lakes		2/2	2/2	0/0	6	0	0	0	1	0	1	0	0	6:50
24	* Jeannena Hignite		2/5	0/1	7/10	11	0	4	4	1	2	2	0	1	31:26
25	Stisha Rose		0/0	0/0	0/0	0	0	0	0	0	0	1	0	0	4:39
32	Danielle Roaden		0/0	0/0	1/2	1	1	0	1	1	0	0	0	1	18:00
33	* Sarah Elliott		10/16	0/0	5/8	25	8	5	13	3	0	1	2	0	30:37
34	* Jenna Lakes		0/0	0/0	0/0	0	0	3	3	0	1	0	0	0	11:39
42	Heather Deaton		0/0	0/0	0/0	0	0	1	1	0	0	0	0	0	0:34
44	Candrea Bingham		0/0	0/0	0/0	0	0	0	0	2	0	0	0	0	1:23
21	Ashley Whitehead		0/0	0/0	0/0	0	0	0	0	0	0	0	0	0	0:16
40	Kandace Ward														DNP
	Team						0	2	2						
	Totals		16/39	3/17	18/28	53	13	24	37	11	6	9	2	3	160

Total FG	1st Half	13/26	50.0%	2nd Half	3/13	23.1%	Game	16/39	41.0%
3 PT FG	1st Half	2/9	22.2%	2nd Half	1/8	12.5%	Game	3/17	17.6%
Free Throws	1st Half	2/5	40.0%	2nd Half	16/23	69.6%	Game	18/28	64.3%

Home: Calloway County Lakers															
##	Name	P	FG	3 Pt	FT	PTS	ORB	DRB	TR	PF	AST	TO	BS	ST	MIN
14	* Katie Ross	G	1/3	0/0	0/0	2	0	1	1	3	2	1	0	0	18:25
15	Clara Anderson	G	0/1	0/0	0/0	0	1	0	1	0	0	0	0	0	0:34
20	* Felisha Prescott	G	2/6	0/0	0/0	4	1	1	2	2	3	0	0	1	30:27
22	Chelsea Morris	G	0/0	0/0	0/0	0	0	0	0	0	0	0	0	0	0:34
25	* Carley Williams	C	1/7	0/0	0/0	2	2	1	3	2	0	0	0	1	14:37
31	Carrie Radke	F	0/0	0/0	0/0	0	0	0	0	0	0	0	0	0	2:30
34	* Shameka Dial	F	3/6	0/0	2/2	8	3	4	7	2	2	2	0	0	29:55
40	Lindsey White	G	1/8	1/8	0/3	3	0	0	0	3	1	0	0	0	15:19
41	Kelly Taylor	F	0/0	0/0	0/0	0	0	0	0	2	0	1	0	0	8:09
42	Andrea Loveless	C	2/4	0/0	2/2	6	2	0	2	2	0	0	0	0	9:53
44	Brittany Collins	G	0/1	0/0	0/0	0	0	0	0	0	0	0	0	0	0:34
45	* Kalyn Fox	G	4/13	3/6	1/2	12	1	3	4	3	1	3	1	0	27:55
24	Halee Wyatt	G	0/1	0/1	0/0	0	0	0	0	0	0	0	0	1	0:34
55	Nakiah Gibson	C	0/0	0/0	0/0	0	1	0	1	0	0	0	0	0	0:34
	Team						2	0	2						
	Totals		14/50	4/15	5/9	37	13	10	23	19	9	7	1	3	160

Total FG	1st Half	6/23	26.1%	2nd Half	8/27	29.6%	Game	14/50	28.0%
3 PT FG	1st Half	2/7	28.6%	2nd Half	2/8	25.0%	Game	4/15	26.7%
Free Throws	1st Half	3/7	42.9%	2nd Half	2/2	100%	Game	5/9	55.6%

	JC	CAL		JC	CAL		JC	CAL
Free Throw Pts	18	5	3Pt Points	9	12	Pts/Possession	0.76	0.55
Pts off Turnovers	9	6	2nd Chance Points	14	11	Pts off Bench	7	9
Total Rebounds	37	23	Team Rebounds	2	2	Dead Ball Reb	7	6
Off Rebound %	56.5	35.1	Def Rebound %	64.9	43.5	Total Rebound %	61.7	38.3

Technical Fouls **JC** None
CAL None
 Officials David Scheibly, Shannon Feck, Jenny Merlie

	Qtr 1	Qtr 2	Qtr 3	Qtr 4	OT 1	OT 2	OT 3	OT 4	Total
Jackson County Lady Generals	13	17	6	17	0	0	0	0	53
Calloway County Lakers	3	14	8	12	0	0	0	0	37

2003 Houchens Industries/KHSAA Girls' Sweet 16 - Play by Play Report - Period: 1 (pg 1)
Calloway County Lakers vs. Jackson County Lady Generals
Date: 03/27/2003 Time: 2:00 CST Site: Bowling Green, KY Attendance: N

Name	Action	Action	Score	Clock	Diff	Name	Action	Action
14 K Ross	Start Game					15 W Moore	Start Game	
20 F Prescott	Start Game					20 B Bingham	Start Game	
25 C Williams	Start Game					24 J Hignite	Start Game	
34 S Dial	Start Game					33 S Elliott	Start Game	
45 K Fox	Start Game					34 J Lakes	Start Game	
C Williams	Jump Ball Loss			1 7:59		S Elliott	Jump Ball Win	
K Ross	Def Rebound			1 7:46		B Bingham	3Pt Attempt	
K Fox	FG Attempt	F Prescott Off Reb		1 7:29				
K Ross	Turnover	(Traveling)		1 7:00				
			0-2	1 6:50	-2	J Hignite	Layup Made	
C Williams	FG Attempt	S Dial Off Reb		1 6:26				
C Williams	FG Attempt			1 6:19		B Bingham	Def Rebound	
				1 6:02		W Moore	3Pt Attempt	S Elliott Off Reb
				1 6:00		S Elliott	Putback Att	S Elliott Off Reb
			0-4	1 5:58	-4	S Elliott	Putback Made	
F Prescott	FG Attempt			1 5:39		JC	Def Rebound	
				1 5:14		S Elliott	FG Attempt	S Elliott Off Reb
			0-6	1 5:12	-6	S Elliott	Putback Made	
C Williams	FG Attempt			1 4:55		S Elliott	Def Rebound	
				1 4:38		S Elliott	FG Attempt	S Elliott Off Reb
			0-8	1 4:36	-8	S Elliott	Putback Made	
C Williams	FG Attempt	C Williams Off Reb		1 4:17				
C Williams	Putback Att			1 4:15		J Lakes	Def Rebound	
				1 3:58		D Roaden	Enter Game	for J Lakes
K Taylor	Enter Game	for C Williams		1 3:58				
CAL	Def Rebound	(Dead Ball Reb)		1 3:54		B Bingham	3Pt Attempt	
				1 3:54		D Roaden	Personal Foul	
L White	Enter Game	for K Ross		1 3:54				
S Dial	Turnover	(Traveling)		1 3:21				
				1 3:03		B Bingham	3Pt Attempt	W Moore Off Reb
K Fox	Personal Foul			1 3:01				
				1 3:01		W Moore	FT Attempt	JC Deadball Reb
			0-9	1 3:01	-9	W Moore	FT Made	
L White	3Pt Attempt			1 2:51		B Bingham	Def Rebound	
			0-11	1 2:31	-11	J Hignite	Layup Made	
CAL	20 Sec Time Out			1 2:30				
				1 2:30		J Lakes	Enter Game	for B Bingham
L White	3Pt Attempt			1 1:55		W Moore	Def Rebound	
				1 1:39		J Hignite	Turnover	(Bad Pass)
				1 1:39				
K Fox	3Pt Attempt			1 1:21		J Lakes	Def Rebound	
F Prescott	Def Rebound			1 1:00		J Hignite	3Pt Attempt	
K Fox	3Pt Made	S Dial Assist	3-11	1 0:46	-8			
			3-13	1 0:15	-10	S Elliott	Layup Made	J Lakes Assist

End of Period Summary Lakers 3 Lady Generals 13

Largest Lead: Lakers 0 Lady Generals 11 (11 pts)

Lead in Period: Lakers 0 Lady Generals 11 (11 pts)

2 for 3 oppo pts
3 for 0 pts
1/11 for 9.09 %
0/0 for 0.00 %

Turnovers
2nd Chances
Field Goals
Free Throws

Lead Changes: 0 Ties: 0
Lead Changes: 0 Ties: 0 (this period)
1 for 0 oppo pts
5 for 7 pts
6/14 for 42.9 %
1/2 for 50.0 %

2003 Houchens Industries/KHSAA Girls' Sweet 16 - Play by Play Report - Period: 2 (pg 1)

Calloway County Lakers vs. Jackson County Lady Generals

Date: 03/27/2003 Time: 2:00 CST Site: Bowling Green, KY Attendance: N

Name	Action	Action	Score	Clock	Diff	Name	Action	Action
				2 8:00		D Roaden	Leave Game	
				2 8:00		B Bingham	Enter Game	for J Lakes
				2 8:00		K Lakes	Enter game	
F Prescott	Leave Game			2 8:00				
S Dial	Leave Game			2 8:00				
L White	Leave Game			2 8:00				
K Taylor	Leave Game			2 8:00				
K Ross	Enter Game	for K Fox		2 8:00				
F Prescott	Enter game			2 8:00				
C Williams	Enter game			2 8:00				
K Taylor	Enter game			2 8:00				
C Radke	Enter game			2 8:00				
			3-16	2 7:48	-13	K Lakes	3Pt Made	J Hignite Assist
K Taylor	Turnover			2 6:59				
				2 6:58		W Moore	Steal	
			3-19	2 6:37	-16	B Bingham	3Pt Made	J Hignite Assist
CAL	20 Sec Time Out			2 6:36				
K Ross	Leave Game			2 6:29				
F Prescott	Leave Game			2 6:29				
C Williams	Leave Game			2 6:29				
C Radke	Leave Game			2 6:29				
K Ross	Enter Game	for K Taylor		2 6:29				
S Dial	Enter game			2 6:29				
K Fox	Enter game			2 6:29				
C Williams	Enter game			2 6:29				
C Radke	Enter game			2 6:29				
				2 6:21		B Bingham	Personal Foul	
K Fox	FT Attempt	CAL Deadball Reb		2 6:21				
K Fox	FT Made		4-19	2 6:21	-15			
				2 6:19		K Lakes	Turnover	(Bad Pass)
S Dial	FG Attempt			2 6:07		J Hignite	Def Rebound	
K Fox	Personal Foul			2 6:04				
				2 5:48		J Hignite	Layup Att	S Elliott Off Reb
				2 5:46		S Elliott	Putback Att	S Elliott Off Reb
			4-21	2 5:45	-17	S Elliott	Putback Made	
C Williams	Personal Foul			2 5:45				
				2 5:45		D Roaden	Enter Game	for K Lakes
A Loveless	Enter Game	for C Williams		2 5:45				
			4-22	2 5:45	-18	S Elliott	FT Made	
K Fox	FG Attempt			2 5:30		JC	Def Rebound	
F Prescott	Enter Game	for C Radke		2 5:30				
			4-24	2 5:06	-20	S Elliott	FG Made	
K Ross	FG Attempt			2 4:50		S Elliott	Def Rebound	
			4-26	2 4:37	-22	S Elliott	FG Made	W Moore Assist
A Loveless	FG Attempt	S Dial Off Reb		2 4:11				
S Dial	Putback Made		6-26	2 4:08	-20			
CAL	Def Rebound	(Dead Ball Reb)		2 3:48		W Moore	3Pt Attempt	
				2 3:47		S Elliott	Personal Foul	
L White	Enter Game	for K Ross		2 3:47				
				2 3:47		C Bingham	Enter Game	for S Elliott
L White	3Pt Attempt	A Loveless Off Reb		2 3:36				
A Loveless	Putback Made		8-26	2 3:34	-18			
				2 3:16		W Moore	3Pt Attempt	B Bingham Off Reb
L White	Personal Foul			2 3:14				
				2 3:14		S Rose	Enter Game	for D Roaden
				2 3:14		B Bingham	FT Attempt	JC Deadball Reb
				2 3:14		B Bingham	FT Attempt	
K Fox	Def Rebound			2 2:59				
A Loveless	FG Attempt	A Loveless Off Reb		2 2:59				
A Loveless	FT Made		9-26	2 2:58	-17	C Bingham	Personal Foul	
A Loveless	FT Made		10-26	2 2:58	-16			
				2 2:58				

2003 Houchens Industries/KHSAA Girls' Sweet 16 - Play by Play Report - Period: 2 (pg 2)
 Calloway County Lakers vs. Jackson County Lady Generals
 Date: 03/27/2003 Time: 2:00 CST Site: Bowling Green, KY Attendance: N

Name	Action	Action	Score	Clock	Diff	Name	Action	Action
				2 2:58		S Elliott	Enter Game	for C Bingham
K Fox	Def Rebound			2 2:27		B Bingham	FG Attempt	
K Fox	Turnover			2 2:21				
			10-28	2 2:20		J Hignite	Steal	
				2 2:07	-18	W Moore	Layup Made	
L White	3Pt Attempt			2 1:42		B Bingham	Def Rebound	
				2 1:22		B Bingham	Turnover	(Traveling)
				2 1:22		K Lakes	Enter Game	for B Bingham
A Loveless	FG Made	S Dial Assist	12-28	2 1:09	-16			
				2 0:48		W Moore	Turnover	
F Prescott	Steal			2 0:47				
K Fox	Layup Made	F Prescott Assist	14-28	2 0:44	-14			
			14-30	2 0:25	-16	S Elliott	FG Made	
				2 0:15		K Lakes	Personal Foul	
L White	FT Attempt	CAL Deadball Reb		2 0:15				
L White	FT Attempt	CAL Deadball Reb		2 0:15				
L White	FT Attempt	K Fox Off Reb		2 0:15				
K Fox	3Pt Made	F Prescott Assist	17-30	2 0:05	-13			

End of Period Summary Lakers 17 Lady Generals 30

Largest Lead: Lakers 4 Lady Generals 26 (22 pts)
Lead in Period: Lakers 4 Lady Generals 26 (22 pts)
 2 for 5 oppo pts
 4 for 9 pts
 5/12 for 41.7 %
 3/7 for 42.9 %

Turnovers
 2nd Chances
 Field Goals
 Free Throws

Lead Changes: 0 Ties: 0
Lead Changes: 0 Ties: 0 (this period)
 3 for 4 oppo pts
 3 for 3 pts
 7/12 for 58.3 %
 1/3 for 33.3 %

2003 Houchens Industries/KHSAA Girls' Sweet 16 - Game Box Score
Calloway County Lakers vs. Jackson County Lady Generals
Date: 03/27/2003 Time: 2:00 CST Site: Bowling Green, KY Attendance: N

Visitors: Jackson County Lady Generals

##	Name	P	FG	3 Pt	FT	PTS	ORB	DRB	TR	PF	AST	TO	BS	ST	MIN
10	Kourtney Tyra														DNP
11	Amanda Martin														DNP
12	Ashley Truett														DNP
15	* Whitney Moore		1/4	0/3	1/2	3	1	1	2	0	1	1	0	1	16:00
20	* Brittany Bingham		1/5	1/4	0/2	3	1	3	4	1	0	1	0	0	12:08
23	Kenni Lakes		1/1	1/1	0/0	3	0	0	0	1	0	1	0	0	3:37
24	* Jeannena Hignite		2/4	0/1	0/0	4	0	1	1	0	2	1	0	1	16:00
25	Stisha Rose		0/0	0/0	0/0	0	0	0	0	0	0	0	0	0	3:14
32	Danielle Roaden		0/0	0/0	0/0	0	0	0	0	1	0	0	0	0	6:29
33	* Sarah Elliott		8/12	0/0	1/1	17	6	2	8	1	0	0	0	0	15:11
34	* Jenna Lakes		0/0	0/0	0/0	0	0	2	2	0	1	0	0	0	6:32
42	Heather Deaton														DNP
44	Candrea Bingham		0/0	0/0	0/0	0	0	0	0	1	0	0	0	0	0:49
21	Ashley Whitehead														DNP
40	Kandace Ward														DNP
	Team						0	2	2						
	Totals		13/26	2/9	2/5	30	8	11	19	5	4	4	0	2	80

Total FG	1st Half	13/26	50.0%	2nd Half	0/0	0.00%	Game	13/26	50.0%
3 PT FG	1st Half	2/9	22.2%	2nd Half	0/0	0.00%	Game	2/9	22.2%
Free Throws	1st Half	2/5	40.0%	2nd Half	0/0	0.00%	Game	2/5	40.0%

Home: Calloway County Lakers

##	Name	P	FG	3 Pt	FT	PTS	ORB	DRB	TR	PF	AST	TO	BS	ST	MIN
14	* Katie Ross	G	0/1	0/0	0/0	0	0	1	1	0	0	1	0	0	8:19
15	Ciara Anderson	G													DNP
20	* Felisha Prescott	G	0/1	0/0	0/0	0	1	1	2	0	2	0	0	1	15:01
22	Chelsea Morris	G													DNP
25	* Carley Williams	C	0/5	0/0	0/0	0	1	0	1	1	0	0	0	0	6:17
31	Carrie Radke	F	0/0	0/0	0/0	0	0	0	0	0	0	0	0	0	2:30
34	* Shameka Dial	F	1/2	0/0	0/0	2	2	0	2	0	2	1	0	0	14:29
40	Lindsey White	G	0/4	0/4	0/3	0	0	0	0	1	0	0	0	0	7:41
41	Kelly Taylor	F	0/0	0/0	0/0	0	0	0	0	0	0	1	0	0	5:29
42	Andrea Loveless	C	2/4	0/0	2/2	6	2	0	2	0	0	0	0	0	5:45
44	Brittany Collins	G													DNP
45	* Kalyn Fox	G	3/6	2/3	1/2	9	1	2	3	2	0	1	0	0	14:29
24	Halee Wyatt	G													DNP
55	Nakiah Gibson	C													DNP
	Team						0	0	0						
	Totals		6/23	2/7	3/7	17	7	4	11	4	4	4	0	1	80

Total FG	1st Half	6/23	26.1%	2nd Half	0/0	0.00%	Game	6/23	26.1%
3 PT FG	1st Half	2/7	28.6%	2nd Half	0/0	0.00%	Game	2/7	28.6%
Free Throws	1st Half	3/7	42.9%	2nd Half	0/0	0.00%	Game	3/7	42.9%

	JC	CAL		JC	CAL		JC	CAL
Free Throw Pts	2	3	3Pt Points	6	6	Pts/Possession	0.88	0.50
Pts off Turnovers	8	4	2nd Chance Points	10	9	Pts off Bench	3	6
Total Rebounds	19	11	Team Rebounds	2	0	Dead Ball Reb	2	5
Off Rebound %	66.7	38.9	Def Rebound %	61.1	33.3	Total Rebound %	63.3	36.7

Technical Fouls: **JC** None
CAL None
 Officials: David Scheibly, Shannon Feck, Jenny Mertle

	Qtr 1	Qtr 2	Qtr 3	Qtr 4	OT 1	OT 2	OT 3	OT 4	Total
Jackson County Lady Generals	13	17	0	0	0	0	0	0	30
Calloway County Lakers	3	14	0	0	0	0	0	0	17

2003 Houchens Industries/KHSAA Girls' Sweet 16 - Play by Play Report - Period: 3 (pg 1)

Calloway County Lakers vs. Jackson County Lady Generals

Date: 03/27/2003 Time: 2:00 CST Site: Bowling Green, KY Attendance: N

Name	Action	Action	Score	Clock	Diff	Name	Action	Action
				3 8:00		W Moore	Leave Game	
				3 8:00		K Lakes	Leave Game	
				3 8:00		J Hignite	Leave Game	
				3 8:00		S Rose	Leave Game	
				3 8:00		S Elliott	Leave Game	
F Prescott	Leave Game			3 8:00				
S Dial	Leave Game			3 8:00				
L White	Leave Game			3 8:00				
A Loveless	Leave Game			3 8:00				
K Ross	Enter Game	for K Fox		3 8:00				
F Prescott	Enter game			3 8:00				
S Dial	Enter game			3 8:00				
A Loveless	Enter game			3 8:00				
K Fox	Enter game			3 8:00				
				3 8:00		W Moore	Enter game	
				3 8:00		J Lakes	Enter game	
				3 8:00		B Bingham	Enter game	
				3 8:00		K Lakes	Enter game	for K Lakes
				3 8:00		J Hignite	Enter game	
				3 8:00		S Elliott	Enter game	
K Fox	Turnover	(Bad Pass)		3 7:50				
				3 7:22		B Bingham	3Pt Attempt	B Bingham Off Reb
				3 7:19		B Bingham	Turnover	(Fumble)
K Fox	FG Attempt			3 7:01		S Elliott	Block	W Moore Def Reb
S Dial	Def Rebound			3 6:53		W Moore	3Pt Attempt	
K Ross	FG Made		19-30	3 6:34	-11			
			19-32	3 6:10	-13	S Elliott	FG Made	
K Fox	FG Attempt			3 5:58		J Lakes	Def Rebound	
			19-34	3 5:36	-15	S Elliott	FG Made	W Moore Assist
CAL	Time Out			3 5:33				
				3 5:33		D Roaden	Enter Game	for J Hignite
				3 5:33		J Hignite	Enter Game	for J Lakes
				3 5:20		B Bingham	Def Rebound	
K Ross	FG Attempt			3 4:57				
A Loveless	Personal Foul			3 4:47		B Bingham	3Pt Attempt	
S Dial	Def Rebound			3 4:35		B Bingham	Def Rebound	
K Fox	FG Attempt			3 4:12				
K Ross	Personal Foul			3 4:12		K Lakes	Enter Game	for B Bingham
				3 3:57				
A Loveless	Personal Foul			3 3:54		W Moore	3Pt Attempt	W Moore Off Reb
				3 3:52				
C Williams	Enter Game	for A Loveless		3 3:42		S Elliott	FG Attempt	
K Fox	Def Rebound			3 3:21	-13			
S Dial	FG Made	K Ross Assist	21-34	3 2:54		J Hignite	FG Attempt	S Elliott Off Reb
K Fox	Block			3 2:44	-14	W Moore	FT Made	
K Ross	Personal Foul		21-35	3 2:44	-15	W Moore	FT Made	
				3 2:44				
				3 2:44		B Bingham	Enter Game	for K Lakes
S Dial	FG Attempt	CAL Off Reb		3 2:12		S Elliott	Block	
C Williams	Layup Made	K Fox Assist	23-36	3 1:57	-13			
				3 1:27		B Bingham	Offensive Foul	
				3 1:27		B Bingham	Turnover	
C Williams	Charge Taken			3 1:27				
K Fox	Turnover			3 1:11				
				3 1:10		D Roaden	Steal	
				3 0:57		J Hignite	Turnover	(Bad Pass)
C Williams	Steal			3 0:52				
				3 0:51		B Bingham	Personal Foul	
L White	Enter Game	for K Fox		3 0:51				
				3 0:51		S Rose	Enter Game	for B Bingham
				3 0:39		J Hignite	Personal Foul	

2003 Houchens Industries/KHSAA Girls' Sweet 16 - Play by Play Report - Period: 3 (pg 2)

Calloway County Lakers vs. Jackson County Lady Generals

Date: 03/27/2003 Time: 2:00 CST Site: Bowling Green, KY Attendance: N

Name	Action	Action	Score	Clock	Diff	Name	Action	Action
F Prescott	FG Made	K Ross Assist	25-36	3 0:24	-11	S Elliott	Layup Att	D Roaden Off Reb
				3 0:01				

End of Period Summary Lakers 25 Lady Generals 36

Largest Lead: Lakers 4 Lady Generals 26 (22 pts)
Lead in Period: Lakers 19 Lady Generals 34 (15 pts)
2 for 0 oppo pts
1 for 0 pts
4/9 for 44.4 %
0/0 for 0.00 %

Turnovers
2nd Chances
Field Goals
Free Throws

Lead Changes: 0 Ties: 0
Lead Changes: 0 Ties: 0 (this period)
3 for 2 oppo pts
4 for 2 pts
2/9 for 22.2 %
2/2 for 100 %

2003 Houchens Industries/KHSAA Girls' Sweet 16 - Play by Play Report - Period: 4 (pg 1)
 Calloway County Lakers vs. Jackson County Lady Generals
 Date: 03/27/2003 Time: 2:00 CST Site: Bowling Green, KY Attendance: 4146

Name	Action	Action	Score	Clock	Diff	Name	Action	Action
				4 8:00		B Bingham	Enter Game	for S Rose
C Williams	FG Attempt			4 7:41		S Elliott	Def Rebound	
				4 7:04		JC	20 Sec Time Out	
				4 6:56		W Moore	3Pt Attempt	S Elliott Off Reb
				4 6:52		B Bingham	3Pt Attempt	
				4 6:51		JC	Def Rebound	(Dead Ball Reb)
F Prescott	Personal Foul			4 6:51				
K Ross	Leave Game			4 6:51				
K Taylor	Enter Game	for C Williams		4 6:51				
K Fox	Enter game			4 6:51				
			25-37	4 6:51	-12	S Elliott	FT Made	
			25-38	4 6:51	-13	S Elliott	FT Made	
F Prescott	FG Attempt			4 6:31		B Bingham	Def Rebound	
CAL	Def Rebound	(Dead Ball Reb)		4 6:07		B Bingham	3Pt Attempt	
				4 6:07		S Elliott	Personal Foul	
L White	3Pt Made	F Prescott Assist	28-38	4 5:41	-10			
K Taylor	Personal Foul		28-39	4 5:09	-11	D Roaden	FT Made	
S Dial	Def Rebound			4 5:09		D Roaden	FT Attempt	
K Fox	3Pt Attempt			4 5:00		S Elliott	Def Rebound	
K Taylor	Personal Foul			4 4:59				
				4 4:59		K Lakes	Enter Game	for B Bingham
S Dial	Def Rebound			4 4:59		S Elliott	FT Attempt	
F Prescott	FG Made	L White Assist	30-39	4 4:39	-9			
F Prescott	Personal Foul			4 4:11				
K Ross	Enter Game	for K Taylor		4 4:11				
				4 4:11		J Hignite	FT Attempt	JC Deadball Reb
			30-40	4 4:11	-10	J Hignite	FT Made	
				4 3:53		S Elliott	Personal Foul	
C Williams	Enter Game	for L White		4 3:53				
S Dial	FT Made		31-40	4 3:53	-9			
S Dial	FT Made		32-40	4 3:53	-8			
			32-43	4 3:36	-11	K Lakes	3Pt Made	W Moore Assist
S Dial	Turnover	(Traveling)		4 3:25				
S Dial	Personal Foul			4 3:16				
				4 3:16		J Lakes	Enter Game	for K Lakes
L White	Enter Game	for K Ross		4 3:16				
			32-44	4 3:16	-12	S Elliott	FT Made	
C Williams	Def Rebound			4 3:16		S Elliott	FT Attempt	
K Fox	FG Attempt			4 3:01				
				4 3:00				
S Dial	Off Rebound			4 2:57				
S Dial	Putback Made		34-44	4 2:57	-10			
				4 2:40		S Elliott	Turnover	(Bad Pass)
				4 2:40				
				4 2:40		B Bingham	Enter Game	for D Roaden
S Dial	FG Attempt	C Williams Off Reb		4 2:28				
F Prescott	FG Attempt			4 2:22		S Elliott	Def Rebound	
L White	Personal Foul		34-45	4 2:14	-11	B Bingham	FT Made	
			34-46	4 2:14	-12	B Bingham	FT Made	
K Fox	3Pt Made		37-46	4 1:57	-9			
CAL	Time Out			4 1:57				
				4 1:57		K Lakes	Enter Game	for J Lakes
K Ross	Enter Game	for F Prescott		4 1:57				
F Prescott	Enter Game	for L White		4 1:57				
K Ross	Personal Foul			4 1:55				
L White	Enter Game	for K Ross		4 1:55				
				4 1:55		J Lakes	Enter Game	for K Lakes
			37-47	4 1:55	-10	J Hignite	FT Made	
			37-48	4 1:55	-11	J Hignite	FT Made	
L White	3Pt Attempt	CAL Off Reb		4 1:45				
F Prescott	FG Attempt			4 1:26		J Hignite	Def Rebound	

2003 Houchens Industries/KHSAA Girls' Sweet 16 - Play by Play Report - Period: 4 (pg 2)

Calloway County Lakers vs. Jackson County Lady Generals

Date: 03/27/2003 Time: 2:00 CST Site: Bowling Green, KY Attendance: 4146

Name	Action	Action	Score	Clock	Diff	Name	Action	Action
C Williams	Personal Foul			4 1:23				
				4 1:23		J Hignite	FT Attempt	JC Deadball Reb
			37-49	4 1:23	-12	J Hignite	FT Made	
K Fox	3Pt Attempt			4 1:12		J Hignite	Def Rebound	
S Dial	Personal Foul			4 1:08				
				4 1:08		J Hignite	FT Attempt	JC Deadball Reb
			37-50	4 1:08	-13	J Hignite	FT Made	
L White	3Pt Attempt			4 0:55		J Hignite	Def Rebound	
K Fox	Personal Foul			4 0:54				
				4 0:54		D Roaden	Enter Game	for W Moore
			37-51	4 0:54	-14	J Hignite	FT Made	
			37-52	4 0:54	-15	J Hignite	FT Made	
				4 0:47		B Bingham	Def Rebound	
L White	3Pt Attempt			4 0:34				
L White	Personal Foul			4 0:34				
F Prescott	Leave Game			4 0:34				
C Williams	Leave Game			4 0:34				
S Dial	Leave Game			4 0:34				
L White	Leave Game			4 0:34				
C Anderson	Enter Game	for K Fox		4 0:34				
C Morris	Enter game			4 0:34				
B Collins	Enter game			4 0:34				
H Wyatt	Enter game			4 0:34				
N Gibson	Enter game			4 0:34				
				4 0:34		B Bingham	Leave Game	
				4 0:34		A Truett	Enter Game	for J Lakes
				4 0:34		S Rose	Enter game	
				4 0:34		S Elliott	FT Attempt	JC Deadball Reb
			37-53	4 0:34	-16	S Elliott	FT Made	
				4 0:34		C Bingham	Enter Game	for S Elliott
				4 0:34		H Deaton	Enter Game	for J Hignite
B Collins	FG Attempt	C Anderson Off Reb		4 0:22				
C Anderson	FG Attempt	N Gibson Off Reb		4 0:17				
				4 0:16		C Bingham	Personal Foul	
				4 0:16		A Whitehead	Enter Game	for D Roaden
H Wyatt	3Pt Attempt			4 0:12		H Deaton	Def Rebound	
				4 0:02		S Rose	Turnover	
H Wyatt	Steal			4 0:01				

End of Period Summary Lakers 37 Lady Generals 53

Largest Lead: Lakers 4 Lady Generals 26 (22 pts)
 Lead in Period: Lakers 37 Lady Generals 53 (16 pts)

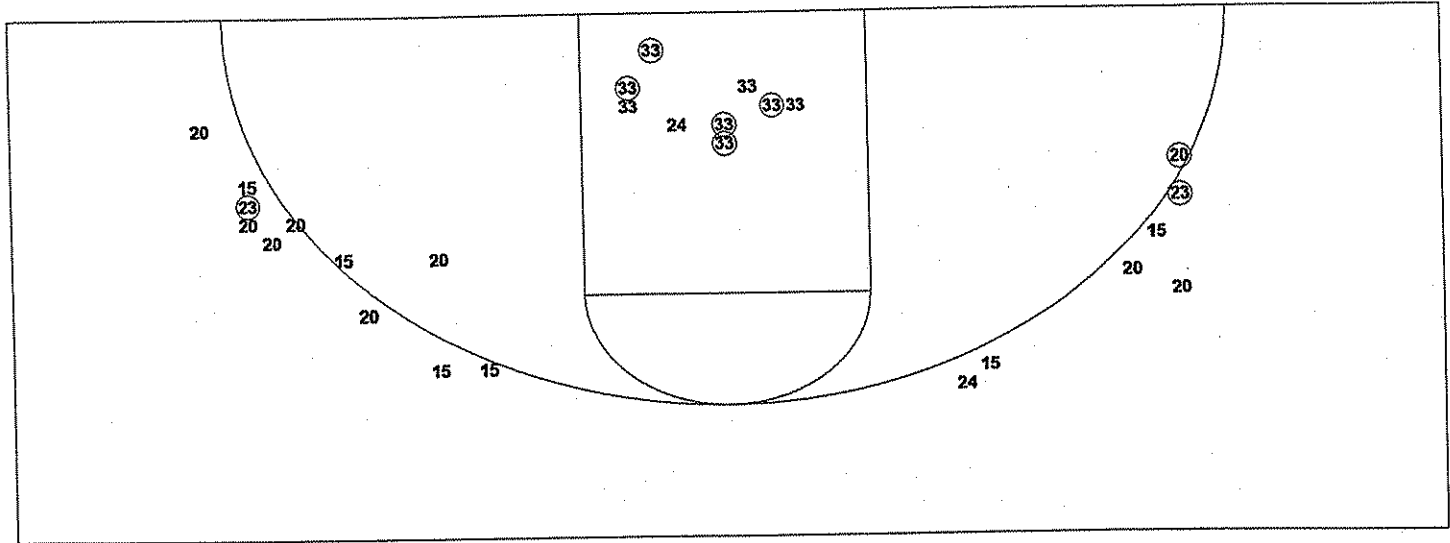
Lead Changes: 0 Ties: 0
 Lead Changes: 0 Ties: 0 (this period)

1 for 1 oppo pts
 5 for 2 pts
 4/18 for 22.2 %
 2/2 for 100 %

Turnovers
 2nd Chances
 Field Goals
 Free Throws

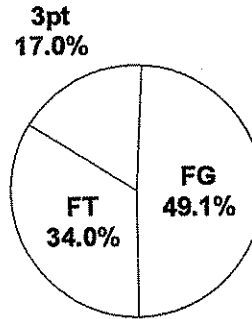
2 for 0 oppo pts
 1 for 2 pts
 1/4 for 25.0 %
 14/21 for 66.7 %

2003 Houchens Industries/KHSAA Girls' Sweet 16 - TEAM SHOT CHART for the Jackson County Lady Generals
 Calloway County Lakers vs. Jackson County Lady Generals
 DATE: 03/27/2003 TIME: 2:00 CST SITE: Bowling Green, KY

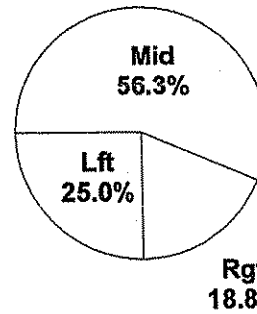


Shot Summary	M/A	%	PTS
3Pt FG	3/17	17.6%	9
2Pt FG	13/22	59.1%	26
Layups - L	3/5	60.0%	6
Layups - R	1/1	100.0%	2
Dunks	0/0	0.0%	0
Putbacks	4/6	66.7%	8
Overall Shooting	16/39	41.0%	35
Free Throws	18/28	64.3%	18
Total Points			53

Scoring Distribution

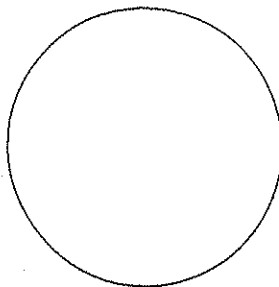


Scoring Locations



By Period	FG	FGA	FG%	3Pt	3PA	3P%	FT	FTA	FT%	PTS	ORB	DRB	TR	PF	AST	TO	BS	ST	P/S
1st Period	6	14	42.9	0	5	0.00	1	2	50.0	13	5	7	12	1	1	1	0	0	0.87
2nd Period	7	12	58.3	2	4	50.0	1	3	33.3	17	3	4	7	4	3	3	0	2	1.31
3rd Period	2	9	22.2	0	4	0.00	2	2	100	6	4	4	8	3	1	3	2	1	0.60
4th Period	1	4	25.0	1	4	25.0	14	21	66.7	17	1	9	10	3	1	2	0	0	1.21
Game	16	39	41.0	3	17	17.6	18	28	64.3	53	13	24	37	11	6	9	2	3	1.00

Scoring Breakdown



Scoring Range

